

STANDARD ARRIVAL CHART-INSTRUMENT

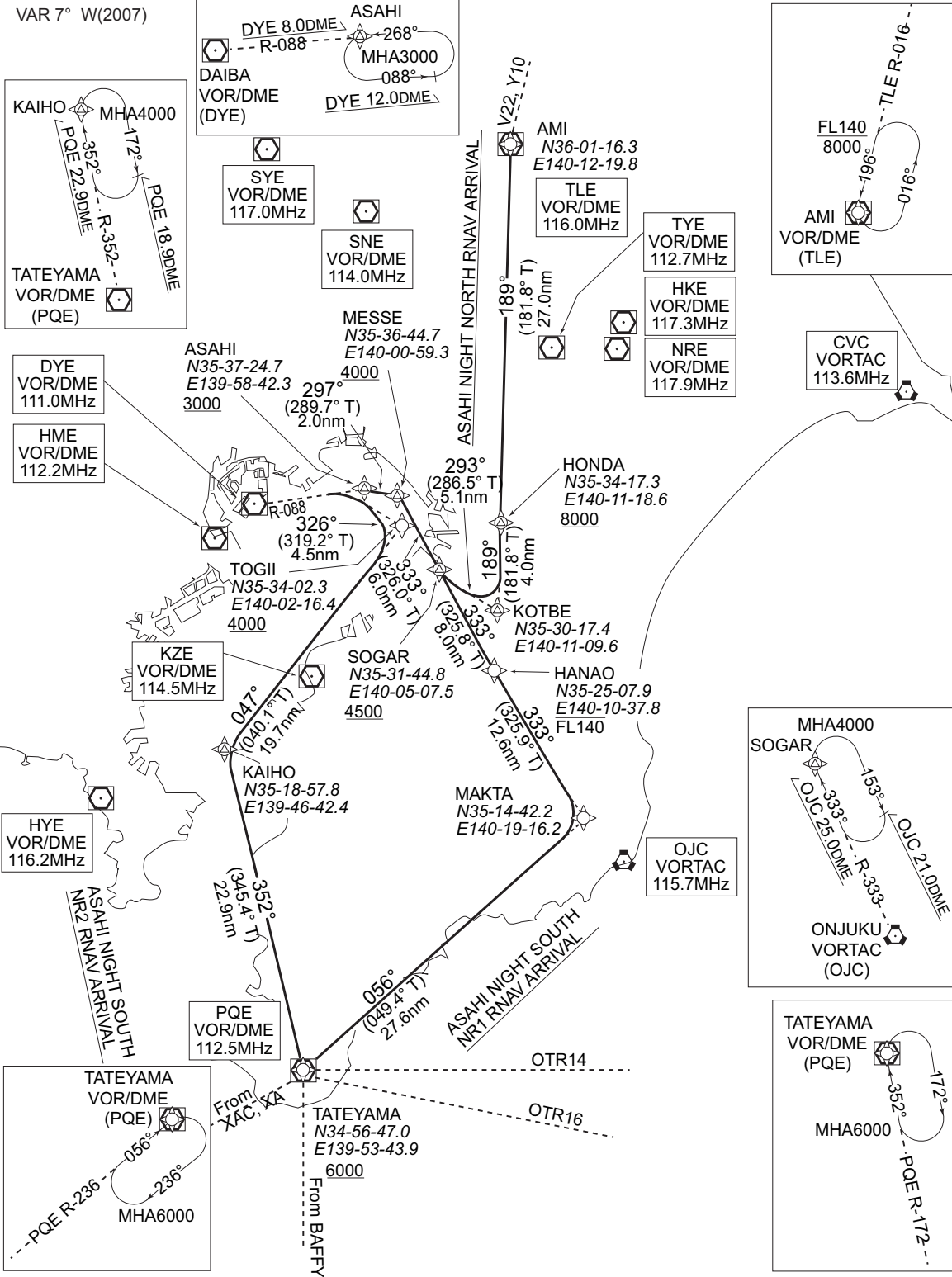
RJTT / TOKYO INTL

RNAV STAR  
RWY22

ASAHI NIGHT NORTH RNAV ARRIVAL  
/ASAHI NIGHT SOUTH NR1 & NR2 RNAV ARRIVAL

RNAV 1

Note 1 ) DME/DME/IRU or GNSS required.  
2 ) RADAR service required.



RJTT / TOKYO INTL

RNAV STAR  
RWY22

ASAHI NIGHT NORTH RNAV ARRIVAL

From TLE, to HONDA at or above 8,000ft, to KOTBE, turn right to SOGAR at or above 4,500ft, to MESSE at or above 4,000ft, turn left to ASAHI at or above 3,000ft.

FIX	DESIGNATION	COORDINATES
	AMI (TLE)	360116.3N 1401219.8E
	HONDA	353417.3N 1401118.6E
	KOTBE	353017.4N 1401109.6E
	SOGAR	353144.8N 1400507.5E
	MESSE	353644.7N 1400059.3E
ASAHI	353724.7N 1395842.3E	
Critical DME	-	
DME GAP	-	
Inappropriate Nav aids	See General Rule 3. Inappropriate NAVAIDs for RNAV1	

Rcmd. Path Terminator	Fix ID (Waypoint Name)	Fly Over	Distance (NM)	MAG Track (TRUE Track)	Turn Direction	Altitude (ft.)	Speed Limit (kt)	Vertical Angle	Navigation Performance
IF	TLE	-	-	-	-	-	-	-	RNAV1
TF	HONDA	-	27.0	189° (181.8°)	-	+8000	-	-	RNAV1
TF	KOTBE	-	4.0	189° (181.8°)	-	-	-	-	RNAV1
TF	SOGAR	-	5.1	293° (286.5°)	-	+4500	-	-	RNAV1
TF	MESSE	-	6.0	333° (326.0°)	-	+4000	-	-	RNAV1
TF	ASAHI	-	2.0	297° (289.7°)	-	+3000	-	-	RNAV1

ASAHI NIGHT SOUTH NR.1 RNAV ARRIVAL

From PQE at or above 6,000ft, to MAKTA, turn left to HANAO at or below FL140, to SOGAR at or above 4,500ft, to MESSE at or above 4,000ft, turn left to ASAHI at or above 3,000ft.

FIX	DESIGNATION	COORDINATES
	TATEYAMA (PQE)	345647.0N 1395343.9E
	MAKTA	351442.2N 1401916.2E
	HANAO	352507.9N 1401037.8E
	SOGAR	353144.8N 1400507.5E
	MESSE	353644.7N 1400059.3E
ASAHI	353724.7N 1395842.3E	
Critical DME	-	
DME GAP	-	
Inappropriate Nav aids	See General Rule 3. Inappropriate NAVAIDs for RNAV1	

Rcmd. Path Terminator	Fix ID (Waypoint Name)	Fly Over	Distance (NM)	MAG Track (TRUE Track)	Turn Direction	Altitude (ft.)	Speed Limit (kt)	Vertical Angle	Navigation Performance
IF	PQE	-	-	-	-	+6000	-	-	RNAV1
TF	MAKTA	-	27.6	056° (049.4°)	-	-	-	-	RNAV1
TF	HANAO	-	12.6	333° (325.9°)	-	-FL140	-	-	RNAV1
TF	SOGAR	-	8.0	333° (325.8°)	-	+4500	-	-	RNAV1
TF	MESSE	-	6.0	333° (326.0°)	-	+4000	-	-	RNAV1
TF	ASAHI	-	2.0	297° (289.7°)	-	+3000	-	-	RNAV1

ASAHI NIGHT SOUTH NR.2 RNAV ARRIVAL

From PQE at or above 6,000ft, to KAIHO, turn right to TOGII at or above 4,000ft, turn left to ASAHI at or above 3,000ft.

FIX	DESIGNATION	COORDINATES
	TATEYAMA (PQE)	345647.0N 1395343.9E
	KAIHO	351857.8N 1394642.4E
	TOGII	353402.3N 1400216.4E
ASAHI	353724.7N 1395842.3E	
Critical DME	-	
DME GAP	-	
Inappropriate Nav aids	See General Rule 3. Inappropriate NAVAIDs for RNAV1	

Rcmd. Path Terminator	Fix ID (Waypoint Name)	Fly Over	Distance (NM)	MAG Track (TRUE Track)	Turn Direction	Altitude (ft.)	Speed Limit (kt)	Vertical Angle	Navigation Performance
IF	PQE	-	-	-	-	+6000	-	-	RNAV1
TF	KAIHO	-	22.9	352° (345.4°)	-	-	-	-	RNAV1
TF	TOGII	-	19.7	047° (040.1°)	-	+4000	-	-	RNAV1
TF	ASAHI	-	4.5	326° (319.2°)	-	+3000	-	-	RNAV1