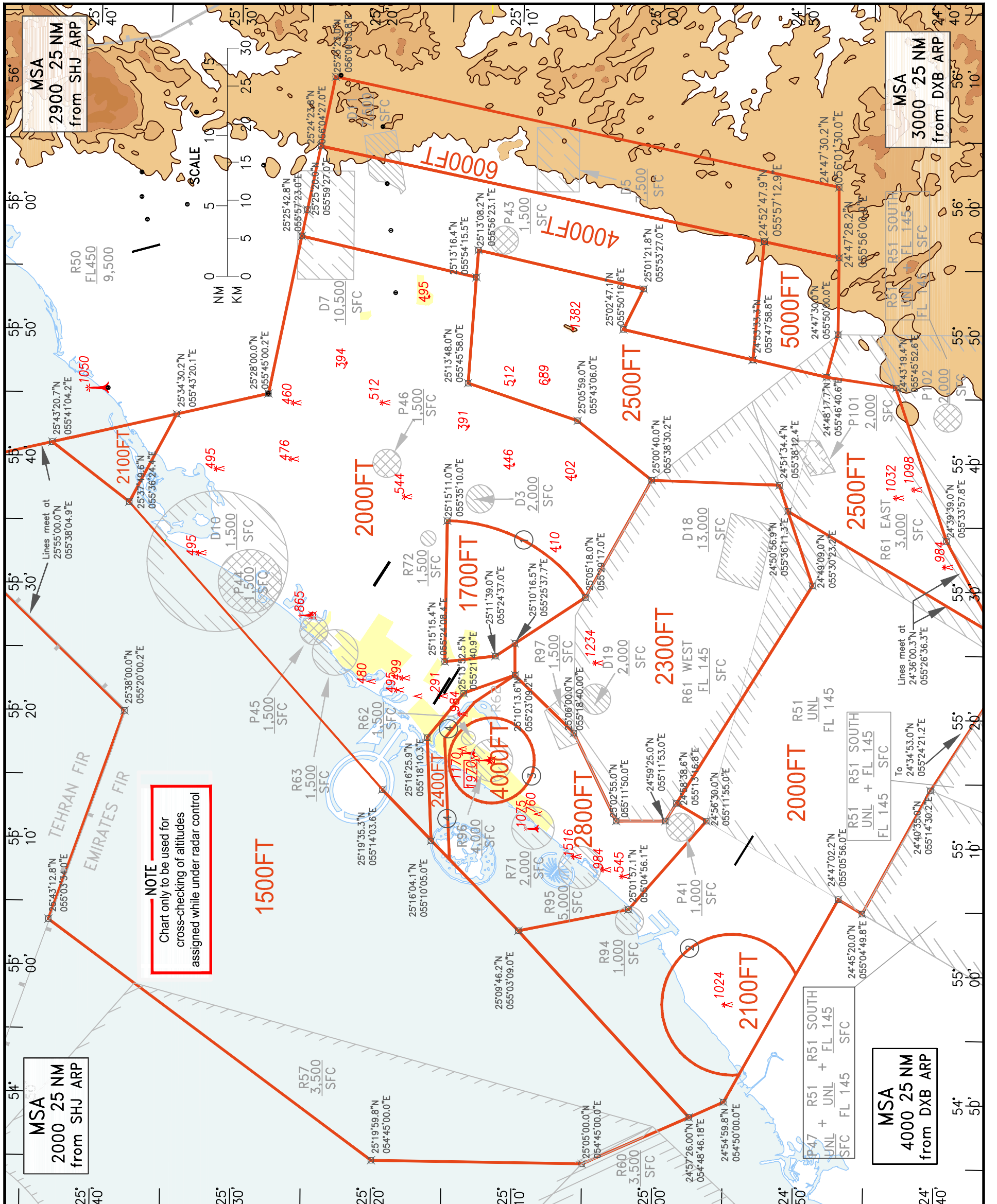


ATC SURVEILLANCE MINIMUM
ALTITUDE CHART - ICAO

DUBAI / Intl.

DUBAI CTA



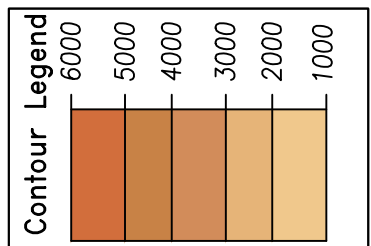
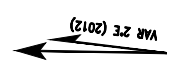
NOTE
Chart only to be used for
cross-checking of altitudes
assigned while under radar control

In case of communication
failure aircraft shall conform
to the procedures specified
in ENR 1.6.1.3

ELEVATIONS AND ALTITUDES
IN FEET

AERODROME
ELEVATIONS
OMDB 62FT
OMDW 171FT
OMSJ 116FT
OMRK 94FT

TRANSITION ALTITUDE
13,000 FT



NOTES

- ARC 12NM centred on PSN 25°15'16.2"N 055°21'56.6"E
- ARC 5NM centred on PSN 24°54'28.1"N 054°57'36.9"E
- CIRCLE 3NM centred on PSN 25°11'49.7"N 055°16'28.9"E
- Area enclosed within:
25°16'04.3"N 055°10'09.0"E
25°16'26.0"N 055°18'11.7"E
25°13'51.9"N 055°21'41.7"E
25°10'15.1"N 055°23'08.6"E
25°13'05.1"N 055°18'08.5"E
25°14'44.9"N 055°08'40.7"E

CHANGES: Amended OMDW AD ELEV.