

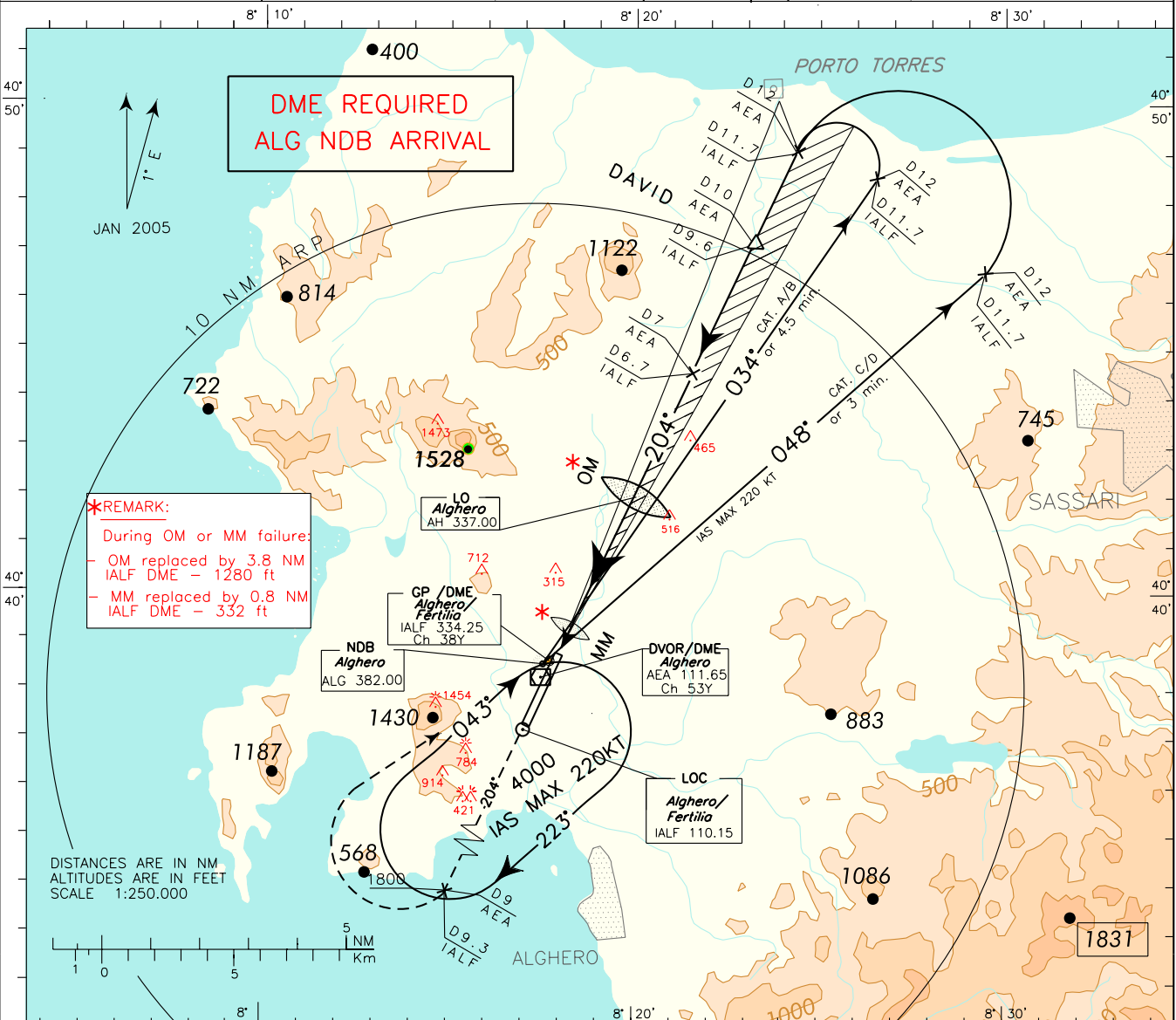
ICAO - INSTRUMENT APPROACH CHART

AD 2 LIEA 5-7

DOC 8168 ED 5 - 2006 AMDT 4

CHANGE: CIRCLING MINIMA "CAT C" MODIFIED

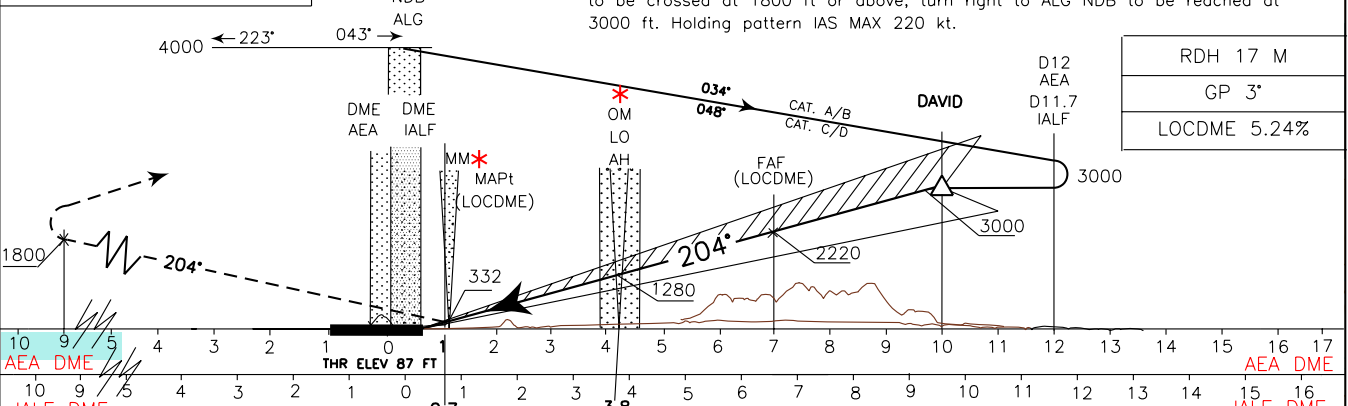
<p><b>WARNING:</b> During HN ± 30 min circling and landing for RWY 02 is forbidden.</p>	APP Alghero Approach 128.550	AD ELEV 87	LIEA	ALGHERO/FERTILIA
	TWR Alghero Tower 118.850			ILS-X



**\*REMARK:**  
 During OM or MM failure:  
 - OM replaced by 3.8 NM IALF DME - 1280 ft  
 - MM replaced by 0.8 NM IALF DME - 332 ft

DISTANCES ARE IN NM  
 ALTITUDES ARE IN FEET  
 SCALE 1:250.000

TRANSITION ALT 6000  
 MISSED APPROACH: Proceed on TR 204° climbing to 3000 ft. At 9 NM AEA DME or 9.3 NM IALF DME to be crossed at 1800 ft or above, turn right to ALG NDB to be reached at 3000 ft. Holding pattern IAS MAX 220 kt.



STRAIGHT IN APPROACH	OCA(OCH)	A				B				C				D				FT PER MIN	GS	FAF-MAPT 6 NM	MAPT-THR 0.52 NM	ALT (HGT)	MNM	SECT	ALT
		ILS	LOCDME	ILS	LOCDME	ILS	LOCDME	ILS	LOCDME	ILS	LOCDME	ILS	LOCDME	ILS	LOCDME	ILS	LOCDME								
CIRCLING only east of RWY	ILS	475(388)	485(398)	495(408)	505(418)															2310 (2223)	ALG	NDB			
	LOCDME	600 (513)																			1990 (1903)				
																				1675 (1588)					
																				1355 (1268)					
																				1035 (948)					
																				720 (633)					

**WARNING:**  
 Due to obstacles not lighted S/W of the AD circling allowed only strictly EAST of the RWY

