

ICAO - INSTRUMENT APPROACH CHART

AD 2 LIEA 5-5

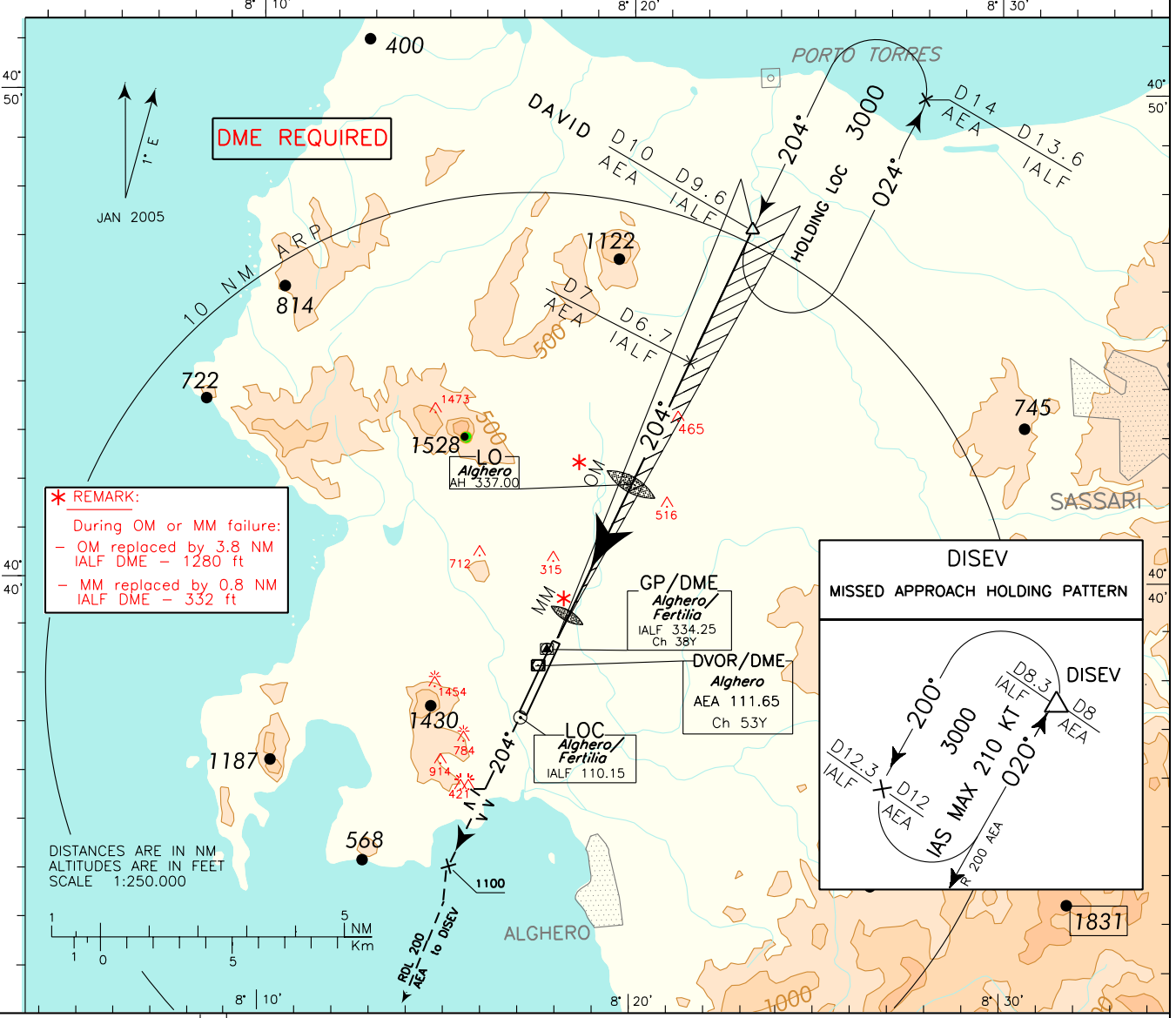
DOC 8168 ED 5 - 2006 AMDT 4

CHANGE: CIRCLING MINIMA "CAT C" MODIFIED

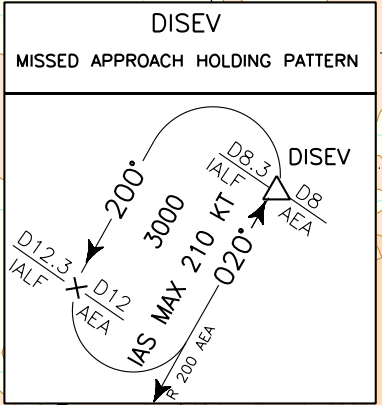
WARNING: During HN ± 30 min circling and landing for RWY 02 is forbidden.

APP *Alghero Approach* 128.550
 TWR *Alghero Tower* 118.850

AD ELEV 87
 LIEA
ALGERO/FERTILIA
 ILS-Y RWY20

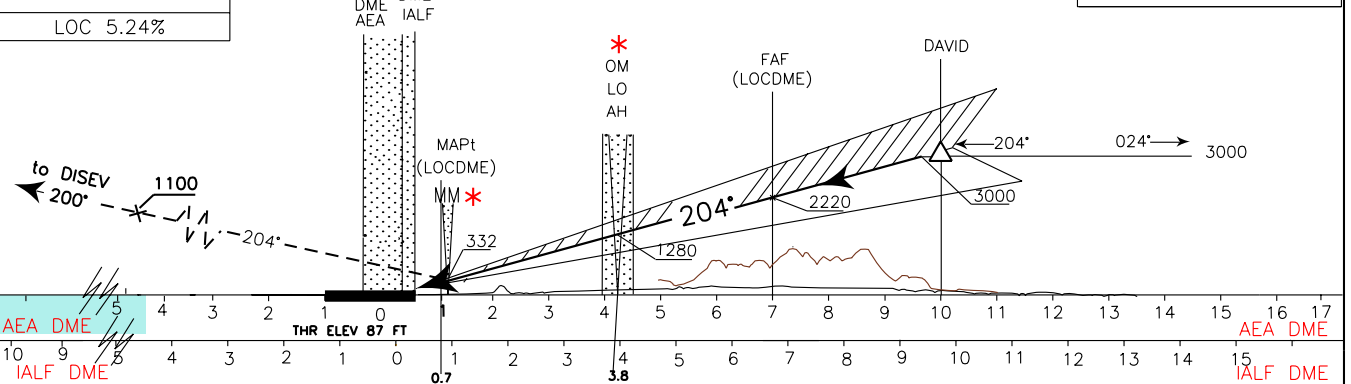


*** REMARK:**
 During OM or MM failure:
 - OM replaced by 3.8 NM IALF DME - 1280 ft
 - MM replaced by 0.8 NM IALF DME - 332 ft



DISTANCES ARE IN NM
 ALTITUDES ARE IN FEET
 SCALE 1:250,000

MISSED APPROACH: Proceed on TR 204° climbing to 3000 ft. Passing 1100 ft proceed on RDL 200 AEA VOR to DISEV point.



OCA(OCH)		A	B	C	D
STRAIGHT IN APPROACH	ILS	475(388)	485(398)	495(408)	505(418)
	LOC/DME	600 (513)			
CIRCLING only east of RWY		700 (613)	1170(1083)	1360(1273)	

WARNING: Due to obstacles not lighted S/W of the AD circling allowed only strictly EAST of the RWY.

FT PER MIN	GS	FAF-MAPT 6 NM	MAPT-THR 0.52 NM	THR DME 0.1 NM	ALT (HGT)
424	80	4 : 30	0 : 23	7	2310 (2223)
530	100	3 : 36	0 : 19	6	1990 (1903)
636	120	3 : 00	0 : 16	5	1675 (1588)
742	140	2 : 34	0 : 13	4	1355 (1268)
848	160	2 : 15	0 : 12	3	1035 (948)
954	180	2 : 00	0 : 10	2	720 (633)

