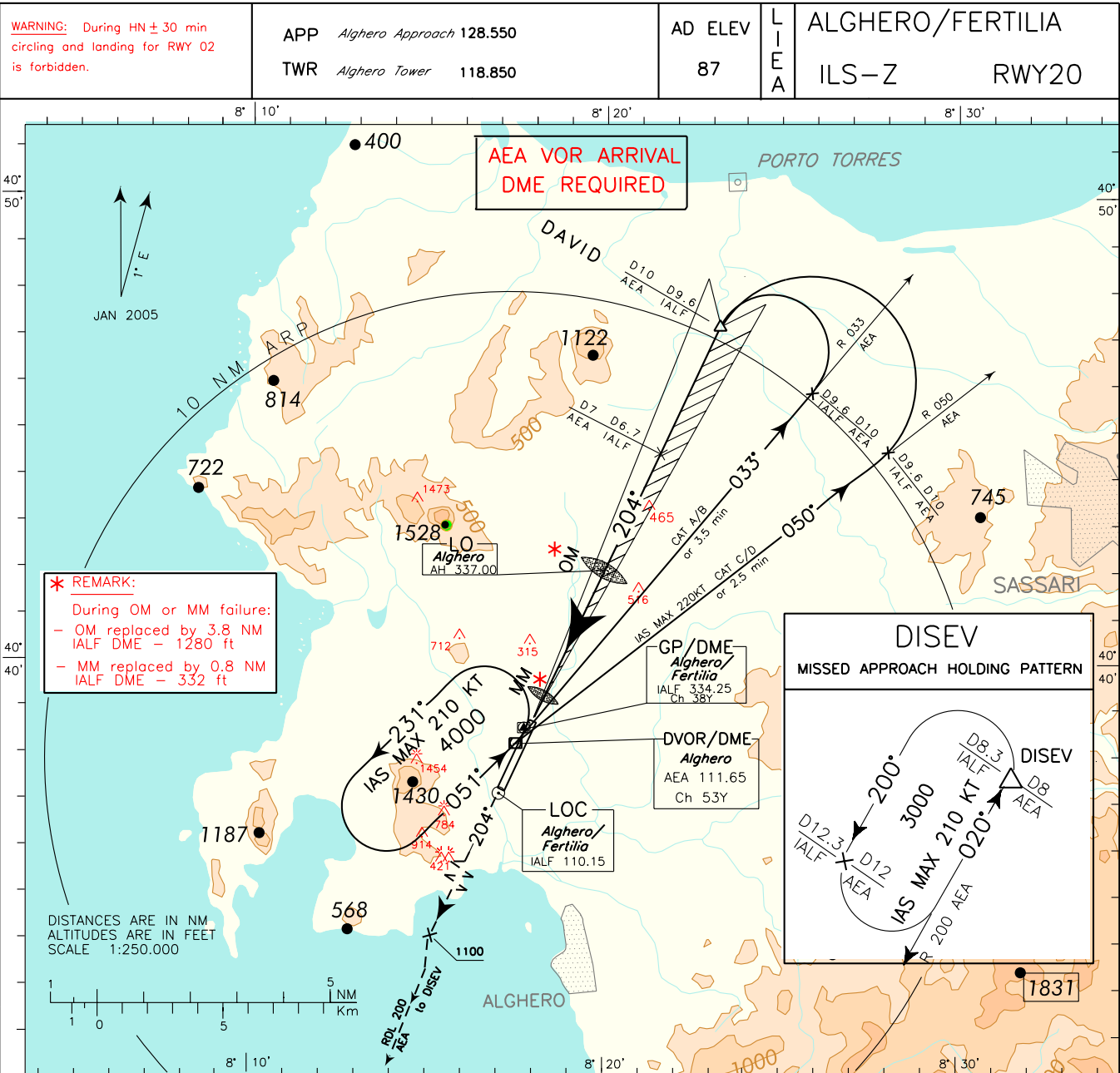


ICAO - INSTRUMENT APPROACH CHART

AD 2 LIEA 5-3

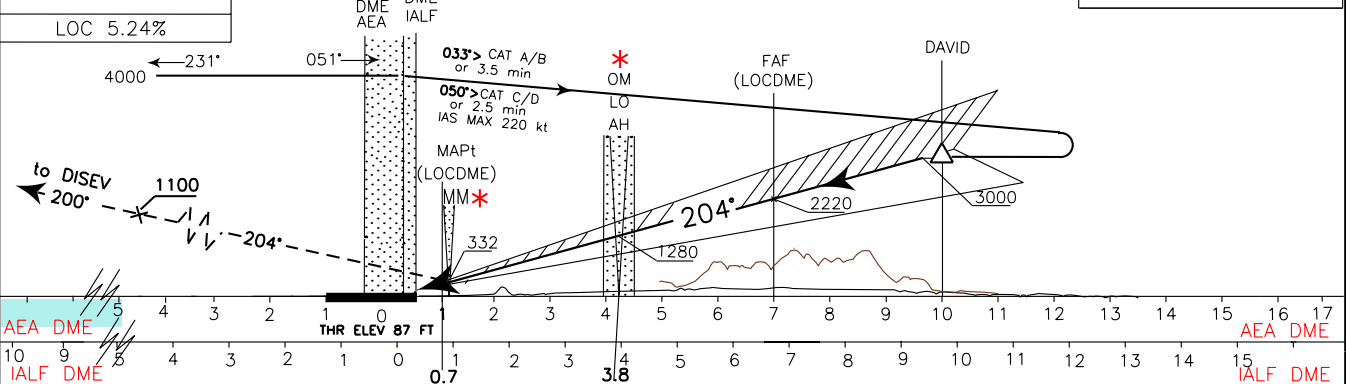
DOC 8168 ED 5 - 2006 AMDT 4

CHANGE: CIRCLING MINIMA "CAT C" MODIFIED



MISSED APPROACH: Proceed on TR 204° climbing to 3000 ft. Passing 1100 ft proceed on RDL 200 AEA VOR to DISEV point.

TRANSITION ALT 6000



OCA(OCH)		A	B	C	D	WARNING: Due to obstacles not lighted S/W of the AD circling allowed only strictly EAST of the RWY	FT PER MIN	GS	FAF-MAPT 6 NM	MAPT-THR 0.52 NM	THR	ALT (HGT)	MNM SECT ALT AEA VOR
STRAIGHT IN APPROACH	ILS	475(388)	485(398)	495(408)	505(418)			424	80	4 : 30	0 : 23	7	2310 (2223)
	LOC/DME	600 (513)				530		100	3 : 36	0 : 19	6	1990 (1903)	
						636		120	3 : 00	0 : 16	5	1675 (1588)	
CIRCLING only east of RWY	700 (613)		1170(1083)		1360(1273)	742		140	2 : 34	0 : 13	4	1355 (1268)	
						848	160	2 : 15	0 : 12	3	1035 (948)		
						954	180	2 : 00	0 : 10	2	720 (633)		