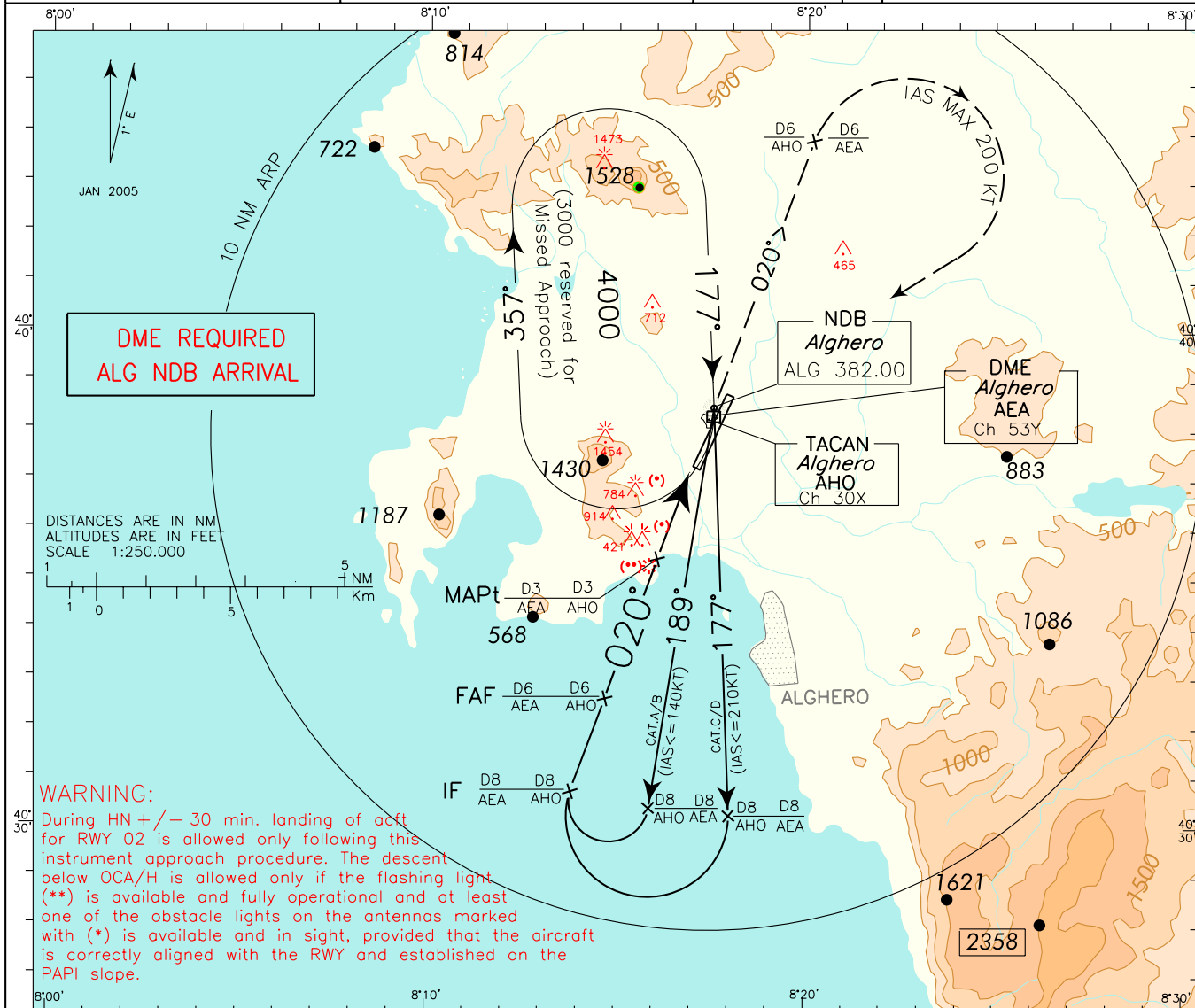


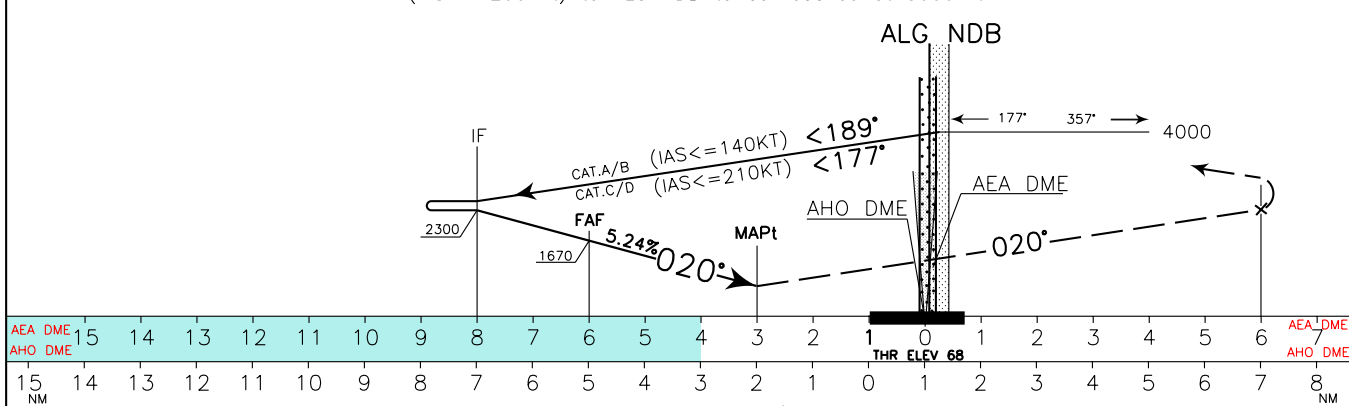
DOC 8168 ED 5 – 2006 AMDT 4  
CHANGE: CIRCLING MINIMA "CAT A, B and C" MODIFIED

<p><b>REMARKS:</b></p> <p>1. Due to not lighted obstacles close to the THR penetrating Annex 14 approach surface, PAPI is compulsory. PAPI OCS not affected by the above obstacles.</p> <p>2. Final approach track 020° is offset 3'44" from RCL.</p>	<p>APP Alghero Approach 128.550</p> <p>TWR Alghero Tower 118.850</p>	<p>AD ELEV</p> <p>87</p>	<p><b>LIEA</b></p> <p><b>ALGHERO/ FERTILIA</b></p> <p><b>NDB RWY 02</b></p>
-------------------------------------------------------------------------------------------------------------------------------------------------------------------------------------------------------------------------------------------------------	----------------------------------------------------------------------	--------------------------	-----------------------------------------------------------------------------



TRANSITION ALT 6000

MISSED APPROACH:  
Proceed on TR 020° climbing to 3000 ft. At 6 NM AHO DME (6 NM AEA DME) turn right (IAS <= 200 kt) to ALG NDB to be reached at 3000 ft.



	15	14	13	12	11	10	9	8	7	6	5	4	3	2	1	0	1	2	3	4	5	6	7	8		
AEA DME																										
AHO DME																										
NM																										
OCA(OCH)	A	B	C	D																						
STRAIGHT IN APPROACH	NDB	1100 (1032)																								
This procedure can be performed with the following meteorological minima: - ceiling 1500 ft or above; - ground visibility not less than 5 Km; - flight visibility not less than 5 Km by day and 8 Km by night					WARNING: CIRCLING ALLOWED ONLY EAST OF THE RWY. CIRCLING FOR RWY 02 IS FORBIDDEN DURING HN +/- 30 MIN.					NOT ALLOWED					GS FT PER MIN 80 424 2 : 15 1 : 30 8 2300 (2232) 100 530 1 : 48 1 : 12 7 2000 (1932) 120 636 1 : 30 1 : 00 6 1670 (1602) 140 742 1 : 17 0 : 51 5 1350 (1282) 160 848 1 : 08 0 : 45 4 1030 (962) 180 954 1 : 00 0 : 40 3 705 (637)				FAF-MAPT MAPt-THR 3 NM 1.99 NM AHO DME AEA DME ALT (HGT)				MNM SECT ALT ALG NDB			
CIRCLING	1170 (1083)				1360(1273)																					