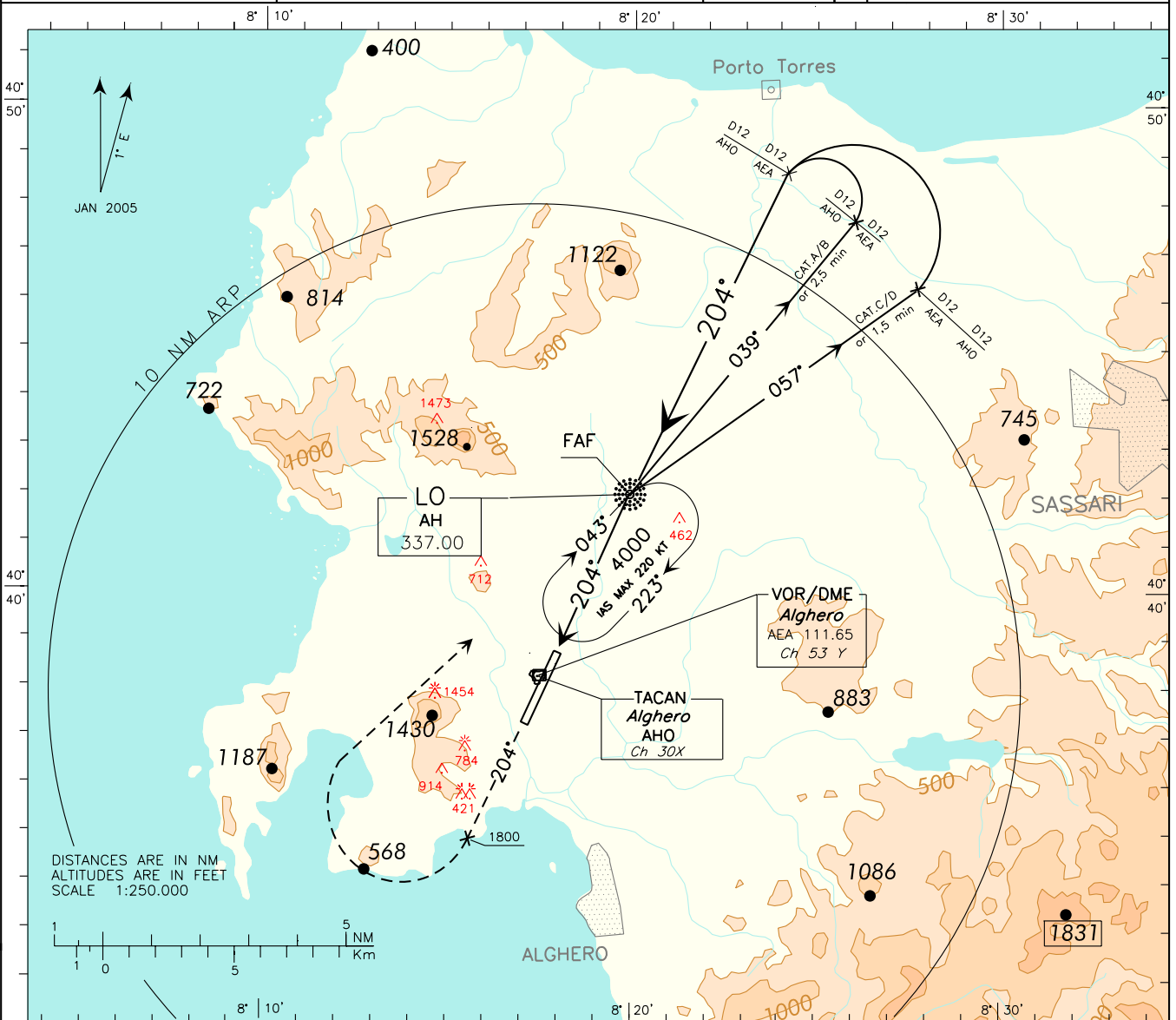


ICAO - INSTRUMENT APPROACH CHART

AD 2 LIEA 5-15

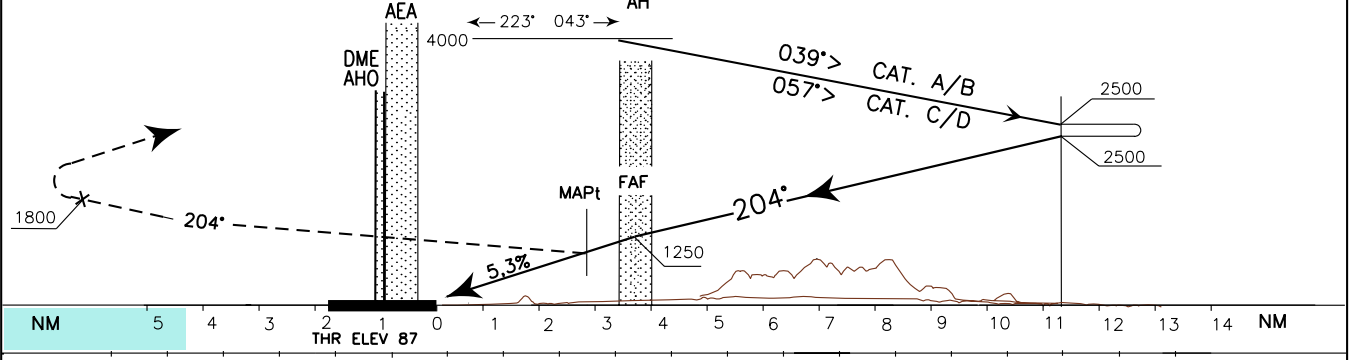
DOC 8168 ED 5 - 2006 AMDT 4
CHANGE: CIRCLING MINIMA "CAT A, B and C" MODIFIED

WARNING: During HN ± 30 min circling and landing for RWY02 is forbidden.	APP <i>Alghero Approach</i> 128.550	TWR <i>Alghero Tower</i> 118.850	AD ELEV 87	LIEA ALGHERO/FERTILIA L RWY 20
---	--	-------------------------------------	---------------	--------------------------------------



TRANSITION ALT 6000

MISSED APPROACH: Proceed on TR 204° climbing to 3000 ft. Passing 1800 ft turn right to AH L to be reached at 3000 ft. Holding pattern IAS MAX 220 kt.



AEA/AHO DME				AEA/AHO DME			
OCA(OCH)	A	B	C	D	WARNING: Due to obstacles not lighted S/W of the AD circling allowed only strictly EAST of the RWY 		
STRAIGHT IN APPROACH	L	1100 (1013)					
CIRCLING	only east of RWY	1170 (1083)		1360(1273)			
	GS	FAF-MAPt	0.87 NM		MNM SECT ALT		
	430	80	0 : 39				
	535	100	0 : 31				
	645	120	0 : 26				
	750	140	0 : 22				
	860	160	0 : 20				
	966	180	0 : 17				