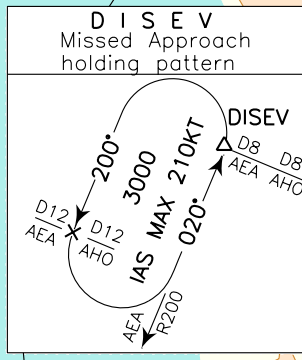


ICAO - INSTRUMENT APPROACH CHART

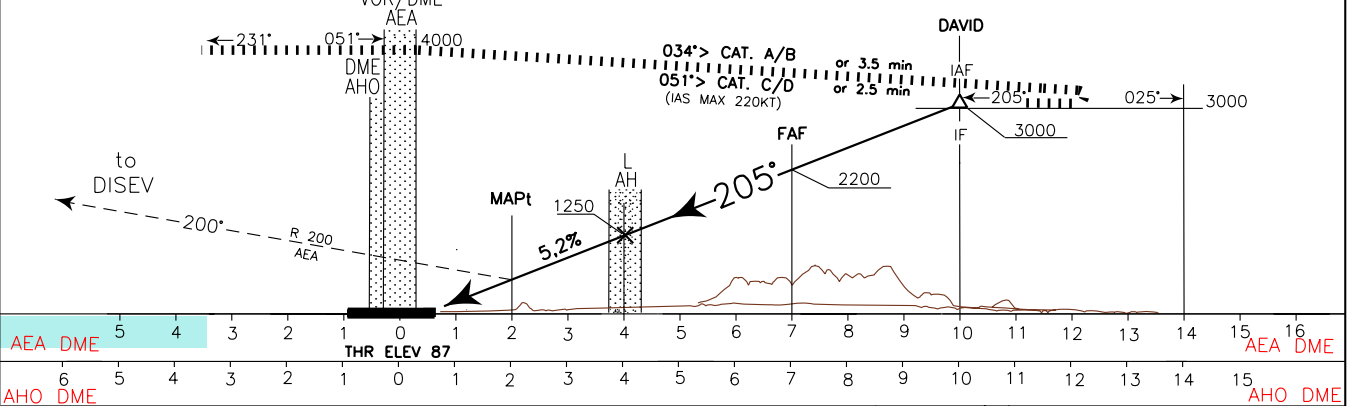
AD 2 LIEA 5-13

DOC 8168 ED 5 - 2006 AMDT 4

<p><b>WARNING:</b> During HN ± 30 min circling and landing for RWY02 is forbidden.</p>	APP <i>Alghero Approach</i> 128.550	AD ELEV 87	LIEA	ALGHERO/FERTILIA VOR RWY 20
	TWR <i>Alghero Tower</i> 118.850			



TRANSITION ALT 6000 MISSED APPROACH: Proceed to AEA VOR climbing to 3000 ft. Leave AEA VOR on RDL 200 (TR 200°) bound to DISEV.



OCA(OCH)		A	B	C	D
STRAIGHT IN APPROACH	VOR/DME	620 (533)			
CIRCLING only east of RWY		700 (613)	1170(1083)	1360(1273)	

**WARNING:** Due to obstacles not lighted S/W of the AD circling allowed only strictly EAST of the RWY

FT PER MIN	GS	FAF-MAPT 5.00 NM	ALT (HGT)
421	80	3 : 45	7 2200 (2113)
527	100	3 : 00	6 1885 (1798)
632	120	2 : 30	5 1570 (1483)
737	140	2 : 09	4 1250 (1163)
843	160	1 : 52	3 940 (853)
948	180	1 : 40	2 625 (538)

