

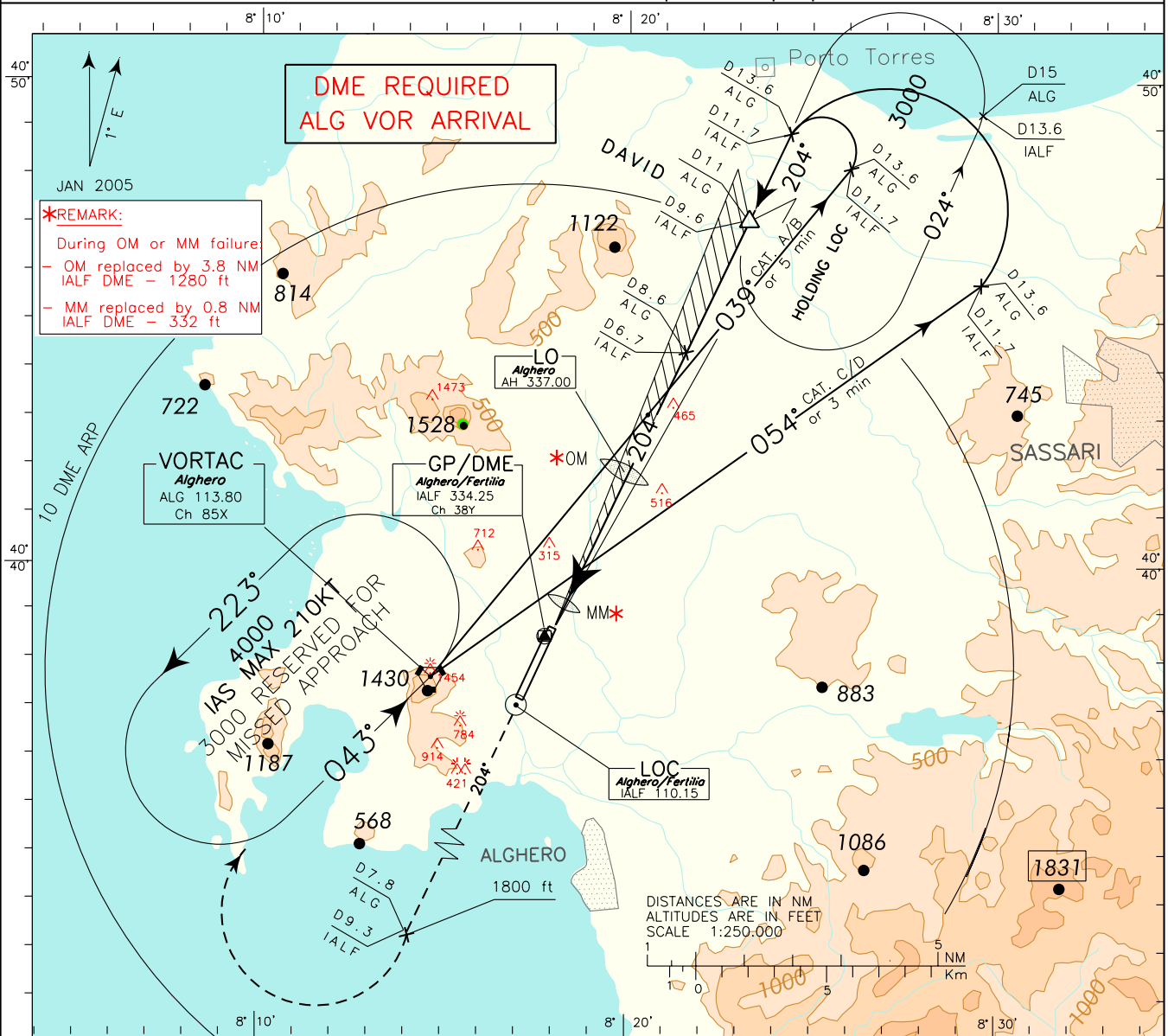
ICAO - INSTRUMENT APPROACH CHART

AD 2 LIA 5-11

DOC 8168 ED 5 - 2006 AMDT 4

CHANGE: CIRCLING MINIMA "CAT C" MODIFIED

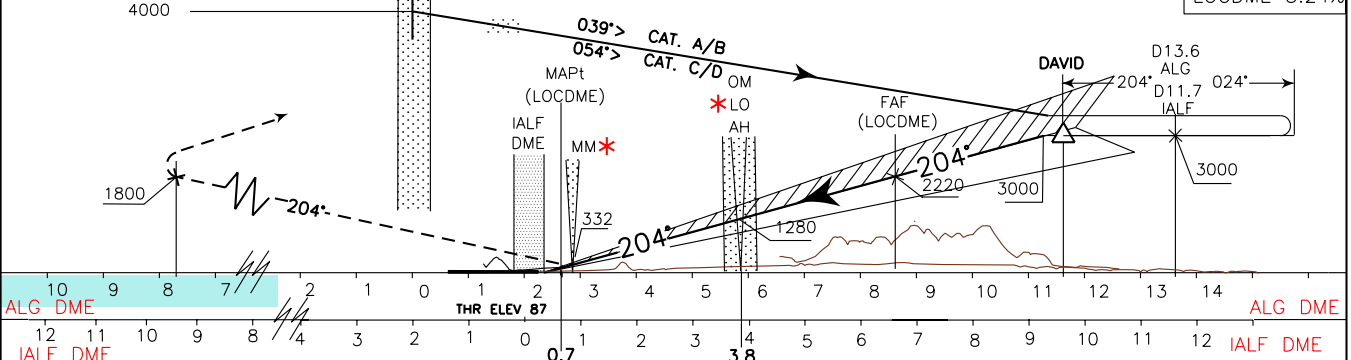
<p>WARNING: During HN ± 30 min circling and landing for RWY 02 is forbidden.</p>	<p>APP Alghero Approach 128.550</p> <p>TWR Alghero Tower 118.850</p>	<p>AD ELEV 87</p>	<p style="text-align: center;">L - I - E - A</p>	<p style="text-align: center;">ALGHERO/FERTILIA</p> <p style="text-align: center; color: red;">ATC DISCRETION</p> <p style="text-align: center;">ILS-V RWY20</p>
---	--	-------------------	--	---



TRANSITION ALTITUDE 6000

MISSED APPROACH: Proceed on TR 204° climbing to 3000 ft. At 7.8 NM ALG DME or 9.3 NM IALF DME, to be crossed at 1800 ft or above, turn right to ALG VORTAC to be reached at 3000 ft. Holding pattern IAS MAX 210 kt.

RDH 17 M
GP 3°
LOCDME 5.24%



	ALG DME	THR ELEV 87	3.8	ALG DME	IALF DME		
OCA(OCH)	A	B	C	D			
STRAIGHT IN APPROACH	ILS	475(388)	485(398)	495(408)	505(418)		
	LOCDME	600 (513)					
	CIRCLING only east of RWY	700 (613)	1170(1083)	1360(1273)			
		<p>WARNING: Due to obstacles not lighted S/W of the AD circling allowed only strictly EAST of the RWY</p> <div style="text-align: center;"> <p>NOT ALLOWED</p> </div>					
		FT PER MIN	GS	FAF-MAPT 6 NM	MAPT-THR 0.52 NM	ALT (HGT)	MNM SECT ALT ALG VORTAC
		424	80	4 : 30	0 : 23	7 2310 (2223)	
		530	100	3 : 36	0 : 19	6 1990 (1903)	
		636	120	3 : 00	0 : 16	5 1675 (1588)	
		742	140	2 : 34	0 : 13	4 1355 (1268)	
		848	160	2 : 15	0 : 12	3 1035 (948)	
		954	180	2 : 00	0 : 10	2 720 (633)	