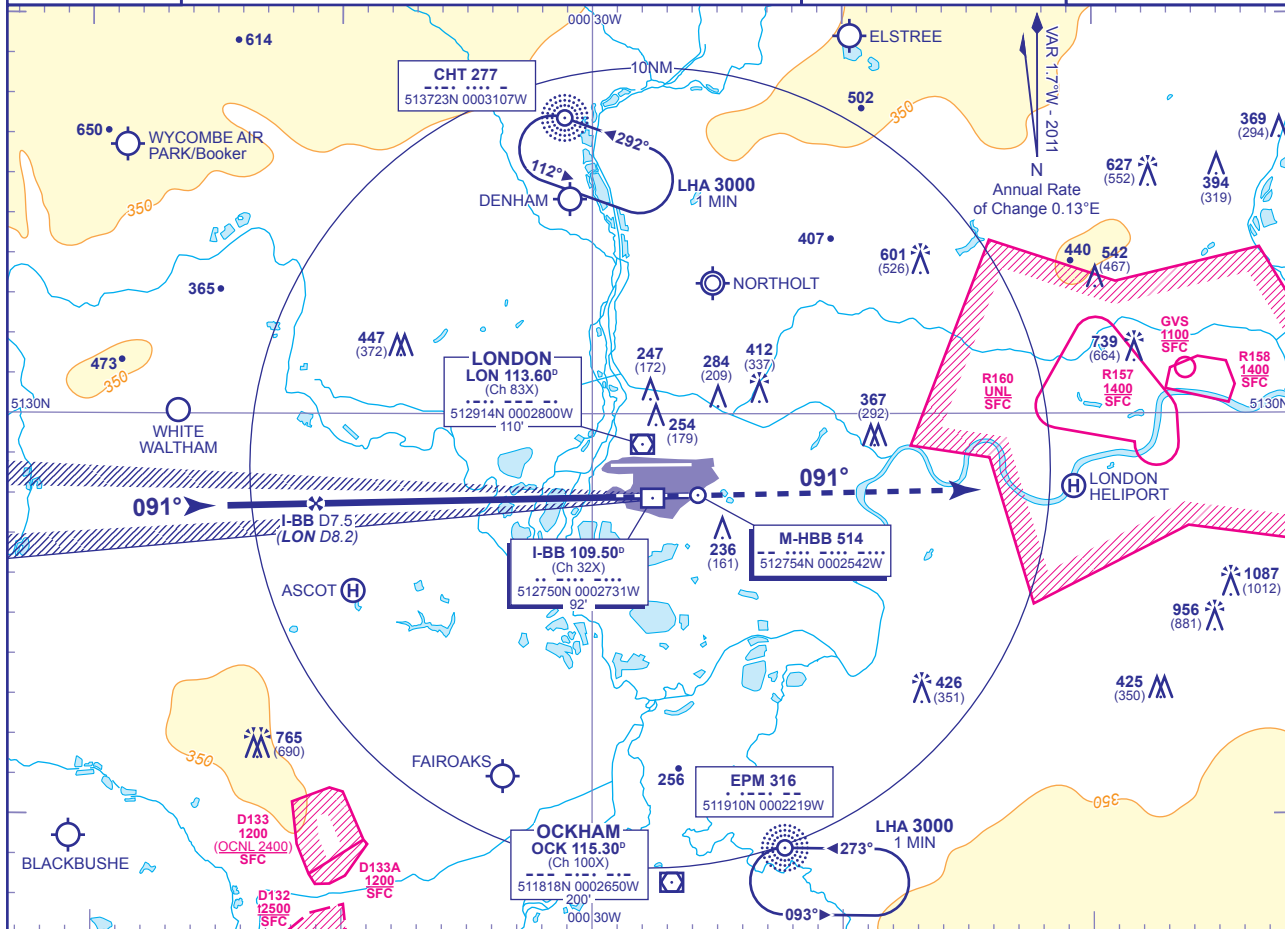


INSTRUMENT APPROACH CHART - ICAO

LONDON/HEATHROW

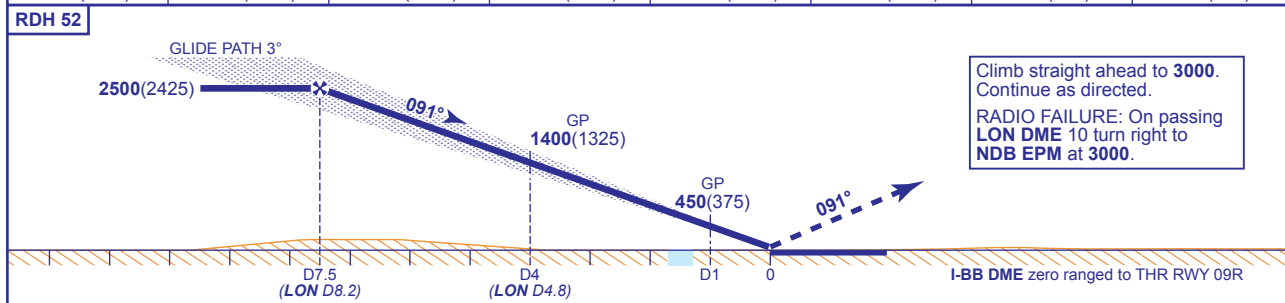
MLS/M-HBB  
DME/I-BB  
RWY 09R  
(ACFT CAT A,B,C,D)

	APP 119.725, 120.400, 127.525, 134.975	HEATHROW DIRECTOR	AD ELEVATION	83
	TWR 118.500, 118.700, 124.475	HEATHROW TOWER	THR ELEVATION	75
	RAD 125.625, 127.525	HEATHROW RADAR	OBSTACLE ELEVATION	1087 AMSL (1012) (ABOVE THR)
	ATIS 128.075, 113.750, 115.100	HEATHROW INFORMATION	BEARINGS ARE MAGNETIC	TRANSITION ALTITUDE 6000



RECOMMENDED PROFILE GLIDE PATH 3°, 318FT/NM

DME I-BB	7	6	5	4	3	2	1
ALT(HGT)	2360(2285)	2040(1965)	1720(1645)	1400(1325)	1080(1005)	760(685)	450(375)



Aircraft Category	DME I-BB				Rate of descent	G/S						
	A	B	C	D		KT	FT/MIN	160	140	120	100	80
OCA (OCH)	CAT I	215(140)	225(150)	237(162)	251(176)	850	740	640	530	420		
	CAT II	124(49)	134(59)	147(72)	160(85)							
VM(C)OCA (OCH AAL)	Total Area	750(667)	750(667)	850(767)	850(767)							

**AIRCRAFT UNABLE TO RECEIVE DME I-BB**  
Advise ATC. Equivalent radar ranges will be provided when established on the final approach track approaching the nominal FAP and 4NM points.

- NOTES**
- Aircraft will normally be radar vectored from the STAR Holding/Initial Approach Fixes.
  - Ranging information is provided by ILS-dedicated DME facilities. DME values derived to the nearest 0.1NM from VOR DME LON are also provided for the FAP and 4NM check altitude/heights.
  - Pilots should 'Request Microwave Approach' on first contact with Heathrow Director.

CHANGE: MAG VAR. BUR NDB REMOVED.

AERO INFO DATE 1 NOV 10