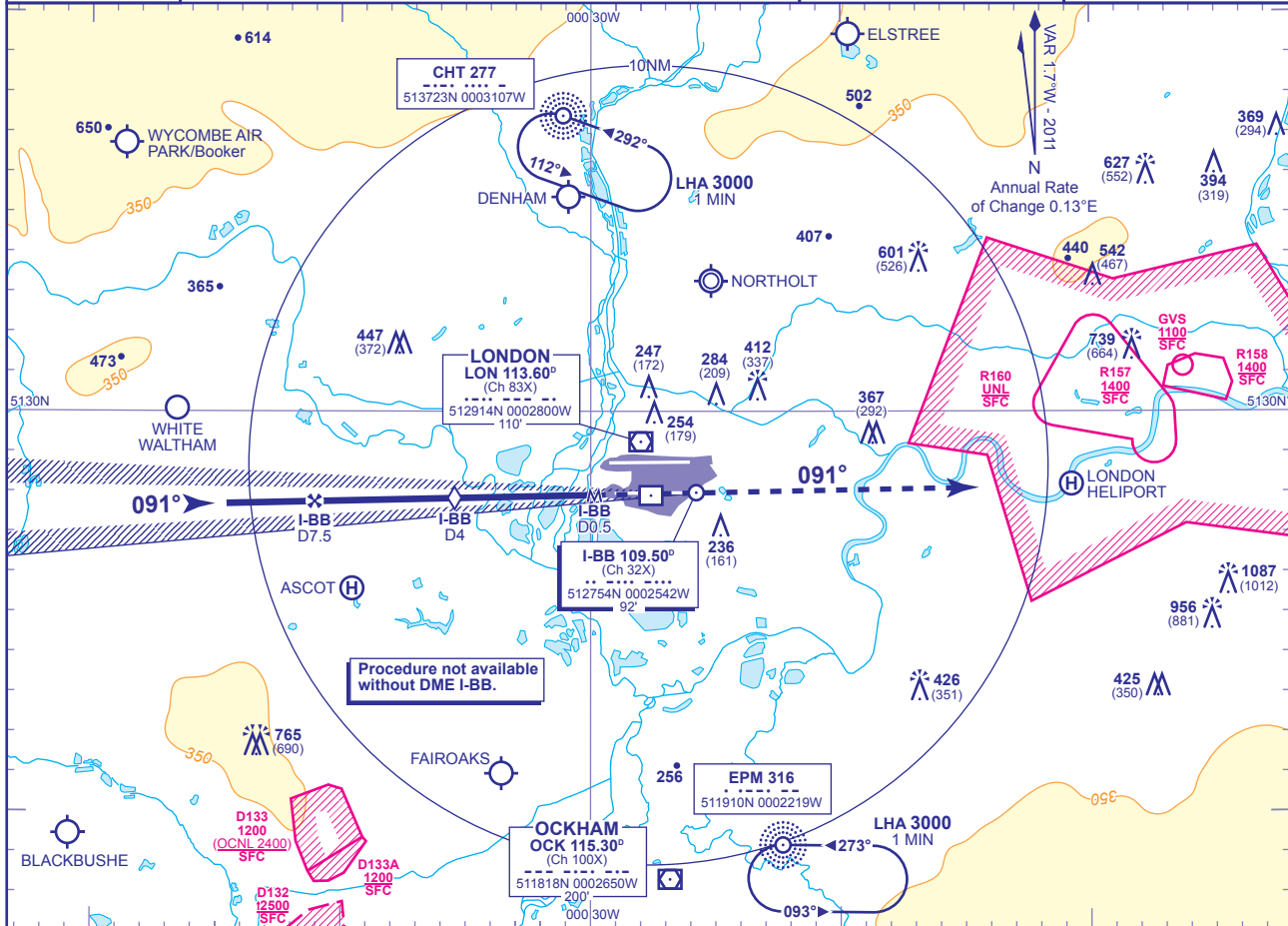


INSTRUMENT APPROACH CHART - ICAO

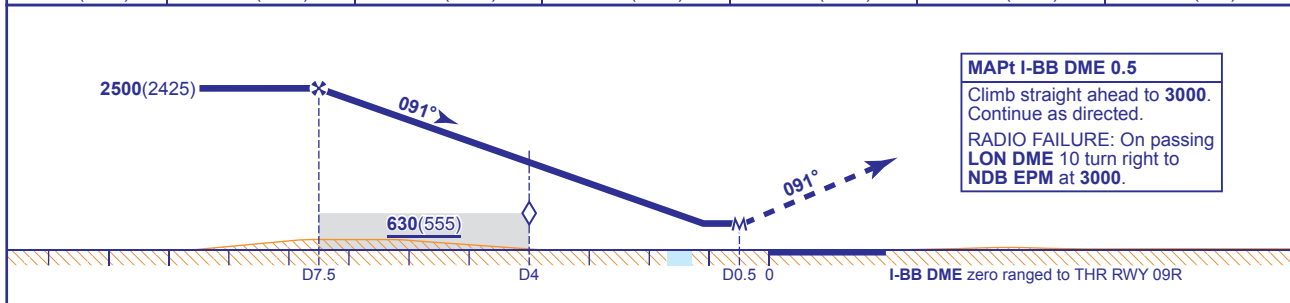
LONDON/HEATHROW  
LOC/DME I-BB  
RWY 09R  
(ACFT CAT A,B,C,D)

	APP 119.725, 120.400, 127.525, 134.975	HEATHROW DIRECTOR	AD ELEVATION	83	TRANSITION ALTITUDE <b>6000</b>
	TWR 118.500, 118.700, 124.475	HEATHROW TOWER	THR ELEVATION	75	
	RAD 125.625, 127.525	HEATHROW RADAR	OBSTACLE ELEVATION	1087 AMSL (1012) (ABOVE THR)	
	ATIS 128.075, 113.750, 115.100	HEATHROW INFORMATION	BEARINGS ARE MAGNETIC		



RECOMMENDED PROFILE Gradient 5.2%, 318FT/NM

DME I-BB	7	6	5	4 (SDF)	3	2
ALT(HGT)	2360(2285)	2040(1965)	1720(1645)	1400(1325)	1080(1005)	760(685)



Aircraft Category		A	B	C	D	Rate of descent	G/S KT	160	140	120	100	80
OCA (OCH)	Procedure	480(405)	480(405)	480(405)	480(405)			FT/MIN	850	740	640	530
VM(C)OCA (OCH AAL)	Total Area	750(667)	750(667)	850(767)	850(767)							

NOTE Aircraft will normally be radar vectored from the STAR Holding/Initial Approach Fixes.

CHANGE: MAG VAR. BUR NDB REMOVED.

AERO INFO DATE 29 OCT 10