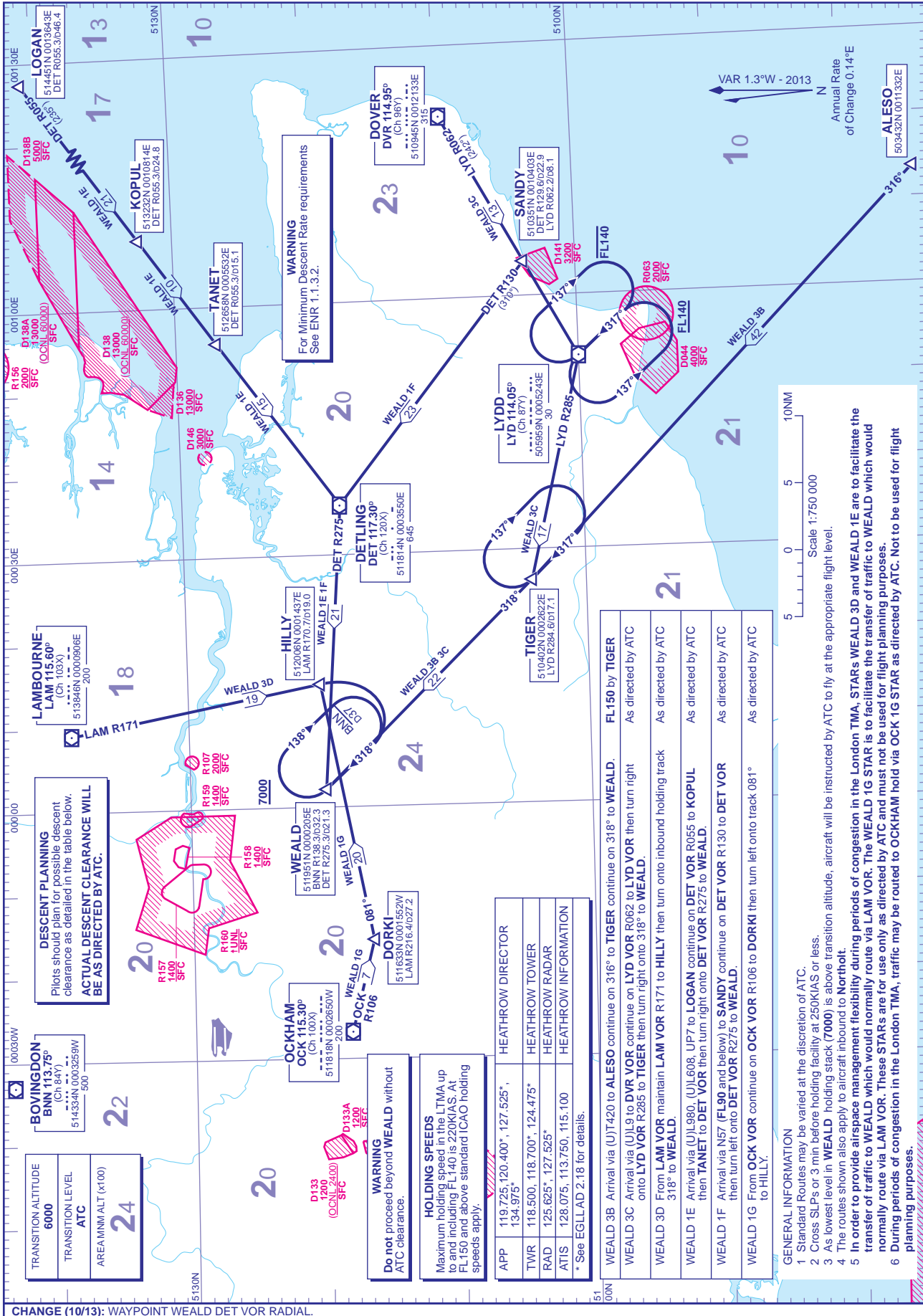


STANDARD ARRIVAL CHART - INSTRUMENT (STAR) - ICAO

DISTANCES IN NAUTICAL MILES
BEARINGS, TRACKS AND RADIALS ARE MAGNETIC
ALTITUDES AND ELEVATIONS ARE IN FEET

LONDON HEATHROW
via WEALD (VOR BIG u/s)



CHANGE (10/13): WAYPOINT WEALD DET VOR RADIAL.

AERO INFO DATE 13 JUN 13

AMDT 10/13

Civil Aviation Authority

DESCENT PLANNING
Pilots should plan for possible descent clearance as detailed in the table below. **ACTUAL DESCENT CLEARANCE WILL BE AS DIRECTED BY ATC.**

TRANSITION ALTITUDE	6000
TRANSITION LEVEL	ATC
AREAMIN ALT (x100)	24

WARNING
Do not proceed beyond WEALD without ATC clearance.

HOLDING SPEEDS
Maximum holding speed in the LTMA up to and including FL140 is 220KIAS. AT FL150 and above standard ICAO holding speeds apply.

APP	119.725, 120.400*, 127.525*, 134.975*	HEATHROW DIRECTOR
TWR	118.500, 118.700*, 124.475*	HEATHROW TOWER
RAD	125.625*, 127.525*	HEATHROW RADAR
ATIS	128.075, 113.750, 115.100	HEATHROW INFORMATION

* See EGLL AD 2.18 for details.

WEALD 3B	Arrival via (U)J420 to ALESO continue on 316° to TIGER then turn onto inbound holding track 318° to WEALD.	FL150 by TIGER
WEALD 3C	Arrival via (U)J9 to DVR VOR continue on LYD VOR R062 to LYD VOR then turn right onto LYD VOR R285 to TIGER then turn right onto 318° to WEALD.	As directed by ATC
WEALD 3D	From LAM VOR maintain LAM VOR R171 then turn onto inbound holding track 318° to WEALD.	As directed by ATC
WEALD 1E	Arrival via (U)JL980, (U)JL608, UP7 to LOGAN continue on DET VOR R065 to KOPUL then TANET to DET VOR then turn right onto DET VOR R275 to WEALD.	As directed by ATC
WEALD 1F	Arrival via N57 (FL90 and below) to SANDY continue on DET VOR R130 to DET VOR then turn left onto DET VOR R275 to WEALD.	As directed by ATC
WEALD 1G	From OCK VOR continue on OCK VOR R106 to DORKI then turn left onto track 081° to HILLY.	As directed by ATC

- GENERAL INFORMATION**
- Standard Routes may be varied at the discretion of ATC.
 - Cross SLPs or 3 min before holding facility at 250KIAS or less.
 - As lowest level in WEALD holding stack (7000) is above transition altitude, aircraft will be instructed by ATC to fly at the appropriate flight level.
 - The routes shown also apply to aircraft inbound to Northolt.
 - In order to provide airspace management flexibility during periods of congestion in the London TMA, STARS WEALD 3D and WEALD 1E are to facilitate the transfer of traffic to WEALD which would normally route via LAM VOR. The WEALD 1G STAR is to facilitate the transfer of traffic to WEALD which would normally route via LAM VOR. These STARS are for use only as directed by ATC and must not be used for flight planning purposes.
 - During periods of congestion in the London TMA, traffic may be routed to OCKHAM hold via OCK 1G STAR as directed by ATC. Not to be used for flight planning purposes.